

APRIL 2017

HOUSE & HOME

THE MAGAZINE OF HOME & STYLE

Best Spring Dessert:
Lemon & Chocolate Tart

BEFORE

FROM DATED TO DAZZLING:
MEET THE HOMEOWNERS
WHO DARED TO DREAM BIG

& AFTER

PATTERNED TILE
GOES MODERN

14 NEW
LOOKS



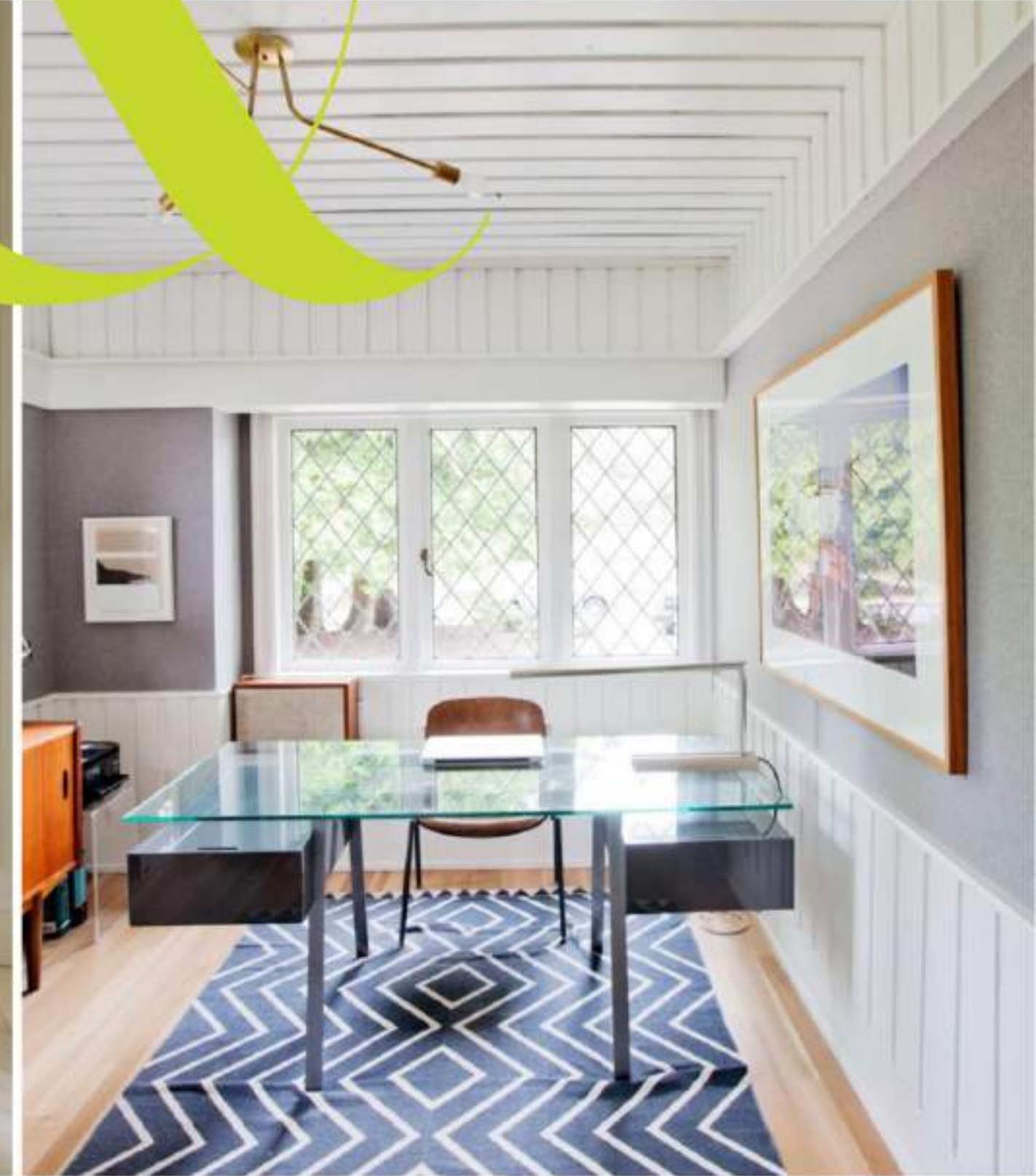
MAKEOVER

*The Real Cost of a
Bathroom Reno:
LYNDA REEVES
COMES CLEAN*



HOUSE & HOME

BEFORE



AFTER

THE RULE OF “no risk, no reward” is especially true when it comes to renovating. Most of us can’t close our eyes and imagine the end result, or know for sure that our ideas will work. But if the impulse for change is strong enough, you take the leap! How else will you get the rooms you want? And, yes, it’s worth it — we promise.

APRIL 2017





Bold pattern and bright hues give this old house youthful energy. In the front hall, viewed here from the grey-panelled dining room, a work by British photographer Luke Stephenson of “cheeky birds” reflects the design’s lighthearted approach. **Rug**, *Bev Hisey*; **pouf**, HomeSense.

YOUNG AT HEART

CRACKING OPEN A HISTORIC HOME AND SPLASHING IT WITH LIBERAL DOSES OF COLOUR READIES IT FOR A NEW GENERATION.

Text by CATHERINE SWEENEY | Photography by VALERIE WILCOX



WHEN A FUN, ART-LOVING FAMILY with two small children meets a serious century home, something's gotta give. In this case, it was a too-formal palette and, well, the whole back of the house.

For 18 months, David Sword and Lise Anne Gougeon worked with interior designer Stephanie Pellatt of Pivot Design and designers Leanne Tammaro and Adolphina Karachok of Designtheory to put a youthful stamp on their stately three-storey Arts and Crafts house in Toronto's West End. "The house had the magic we wanted, and it hadn't been gutted of all its beautiful character," says Lise Anne. It just needed some TLC and personal touches to make it suit the vibrant young clan.

Building an addition at the back was the most sensitive way to create an open-concept kitchen and family room — top on the family's must-have list — while maintaining the historic charm of the other rooms. (It also brought the living space to a roomy 4,200 square feet.) And once the old walls came down, the light poured in. Elsewhere, original features like fireplaces and stained-glass windows were lovingly restored or repurposed.

After the layout was updated, the decorating fun began. Cheerful colours abound, as do bold, gestural patterns that energize rooms by adding an element of surprise. Which is exactly what they're supposed to do: delight the eye and set a joyful backdrop for family life. No wonder Lise Anne calls this their "forever home."



In the centre hall of Lise Anne Gougeon and David Sword's house — shared with son Garner, 4, and daughter Vivienne, 6 — a classic black and white envelope is brightened by a sunny yellow rug, the first hint that the house holds a few surprises. **Tread colour**, *Black Panther* (2125-10), *Benjamin Moore*. >

Enhancing wall trim and panelling

The walls were a primary focus of the reno. Old trimwork was repaired, filled in and added to in some rooms, while in others, more delicate recessed panelling and ceiling details were installed to perfect scale and proportion. Doing so added architectural interest and created an elegant shell that stays true to the home's character.



In the foyer, a modern glass waterfall console is an unexpected accent overtop of the original radiator. The designers painted out the heavy wood panelling in a warm white, pairing it with high-contrast black and white floor tiles for a classic feel. **Console**, *Plata Import*; **mirror**, *Ikea*.



In the living room, the formal architecture is set off by a casual mix of modern and traditional furnishings — a push-pull that speaks to the balance of masculine and feminine pieces throughout the house. “I didn’t want everything matchy-matchy and tied up with a bow, and Adolphina, Leanne and Stephanie understood that,” says Lise Anne. **Chairs, side table, table lamp, West Elm; sofa, coffee table, Anthropologie; floor lamp, Lambert & Fils; ceiling light, Commute Home; art by Gayle Harismowich, Elte Mkt.**





Shaking up the formal living room

The living room fireplace was oddly set off to one side, making furniture placement a challenge. To create symmetry, Stephanie Pellatt of Pivot Design centred the fireplace and updated it from wood-burning to gas (the house still has three other wood-burning fireplaces). She also removed the heavy wainscoting that dated the space to make way for more delicate new recessed panels, plus new baseboards and intricate ceiling detailing. The new look is lighter and more refined, and helps draw the eye upward, making the room feel airier.



Opening up the back of the house

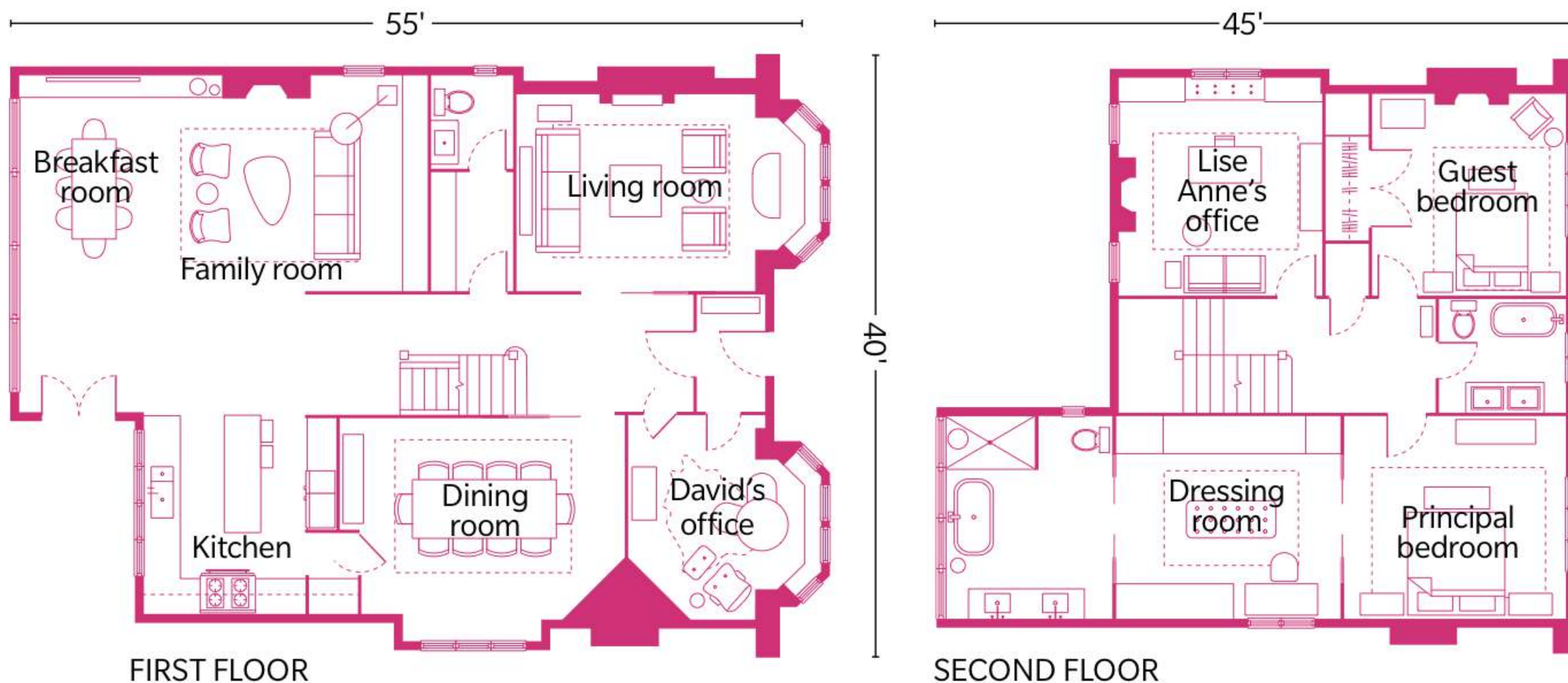
Lise Anne and David wanted a unified new kitchen and family room where they could hang out with the kids. “The only way to do so elegantly was to add on a small, square addition by covering over an existing porch,” says Lise Anne.

Now 12'-high ceilings and wall-to-wall steel-case windows frame views to the garden and add to the enormous sense of space.

Contractor, Andes Construction; **table,** Raelen Storey; **black chairs,** Kanvass; **pendant light** by Oçilunam, In-es.artdesign; **artwork** by Thrush Holmes. >



THE FLOOR PLAN



Key changes made to the layout, including adding a great room at the back of the house, and carving out a mudroom-powder room space on the main floor, greatly improved how the house functions. (The kids' rooms are located on the third floor, *not shown*.)

3 SMALL DECISIONS WITH BIG IMPACT

MIXING HIGH AND LOW

"I'm the queen of thrift," says Lise Anne, who has a love for finding stylish steals on Kijiji, at vintage stores and even overseas. Throughout the house, finds from accessible shops like West Elm and Ikea also blend in easily with custom and high-end pieces. The mix gives the fairly grand house an approachable, easy-going feeling.

CHOOSING FAB FABRICS

Ignoring the conventional advice to buy forever pieces in safe, neutral upholstery paid off in loads of personality. Blue sofas, chairs in bright lemon yellow and a tufted bench the colour of pink rose petals ensure there's never a dull moment in the house.

ADDING QUIRK

Unexpected birdcage pendants by Mathieu Chalières hang above the kitchen island and introduce a little wit and whimsy into the hardworking space. "It's such a modern, refined kitchen, and these are really fun. They balance each other out," says designer Adolphina Karachok.





Cabinet design, [Designtheory](#) and [Pivot Design](#); cabinet construction, [TB Gabel](#); pendants, [Couleur Locale](#).

Reconfiguring the kitchen

An old back stairway was removed to open up the kitchen and allow for more storage, including a full pantry wall and small servery. Flat-front cabinet doors with recessed pulls plus uninterrupted white counters create a sleek and quiet backdrop. A mix of materials — Corian, marble, walnut, stainless steel — gives the room dimension and texture.





The steel-frame windows extend from the breakfast area to the kitchen and help ground the mostly white space. **Stools** by Hay, *Klaus*; **tea towel**, *Lothantique*; **butter bowl**, *Found*. >

Creating a family-friendly hangout zone

Open to the kitchen and breakfast area in the new addition, the family room is the go-to place for spending time together. While the walls are painted crisp white, the team injected colour in other ways, making the space thoroughly inviting for all. "We lightened the mood of the entire house by lifting up the palette," says Stephanie. Original stained-glass windows in the older part of the house served as muse, resulting in a mix of soft, almost pastel shades with more saturated tones like royal blue and yellow.

